



PRC Polyclonal Antibody

Catalog No	YP-Ab-03327
Isotype	IgG
Reactivity	Human;Mouse
Applications	IHC;IF;ELISA
Gene Name	PPRC1
Protein Name	Peroxisome proliferator-activated receptor gamma coactivator-related protein 1
Immunogen	The antiserum was produced against synthesized peptide derived from human PPRC1. AA range:1609-1658
Specificity	PRC Polyclonal Antibody detects endogenous levels of PRC protein.
Formulation	Liquid in PBS containing 50% glycerol, 0.5% BSA and 0.02% sodium azide.
Source	Polyclonal, Rabbit,IgG
Purification	The antibody was affinity-purified from rabbit antiserum by affinity-chromatography using epitope-specific immunogen.
Dilution	IHC: 1/100 - 1/300. ELISA: 1/40000.. IF 1:50-200
Concentration	1 mg/ml
Purity	≥90%
Storage Stability	-20°C/1 year
Synonyms	PPRC1; KIAA0595; Peroxisome proliferator-activated receptor gamma coactivator-related protein 1; PGC-1-related coactivator; PRC
Observed Band	
Cell Pathway	Nucleus . Colocalizes with NRF1. .
Tissue Specificity	Strongly expressed in heart and skeletal muscle, moderately in lung, placenta, intestine, liver, kidney, spleen, thymus, colon and brain. Also expressed in several oncocyctic thyroid tumors.
Function	function:Acts as a coactivator during transcriptional activation of nuclear genes related to mitochondrial biogenesis and cell growth. Involved in the transcription coactivation of CREB and NRF1 target genes.,induction:Up-regulated by serum (at protein level).,similarity:Contains 1 RRM (RNA recognition motif) domain.,subcellular location:Colocalizes with NRF1.,subunit:Interacts with CREB1 and NRF1.,tissue specificity:Strongly expressed in heart and skeletal muscle, moderately in lung, placenta, intestine, liver, kidney, spleen, thymus, colon and brain. Also expressed in several oncocyctic thyroid tumors.,
Background	The protein encoded by this gene is similar to PPAR-gamma coactivator 1 (PPARGC1/PGC-1), a protein that can activate mitochondrial biogenesis in part through a direct interaction with nuclear respiratory factor 1 (NRF1). This protein has been shown to interact with NRF1. It is thought to be a functional relative of



PPAR-gamma coactivator 1 that activates mitochondrial biogenesis through NRF1 in response to proliferative signals. Alternative splicing results in multiple transcript variants. [provided by RefSeq, Dec 2013],

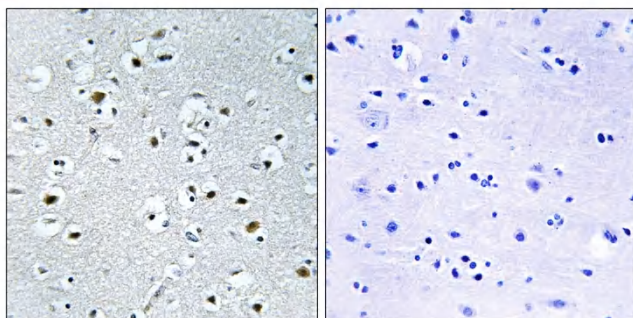
matters needing attention

Avoid repeated freezing and thawing!

Usage suggestions

This product can be used in immunological reaction related experiments. For more information, please consult technical personnel.

Products Images



Immunohistochemistry analysis of paraffin-embedded human brain tissue, using PPRC1 Antibody. The picture on the right is blocked with the synthesized peptide.